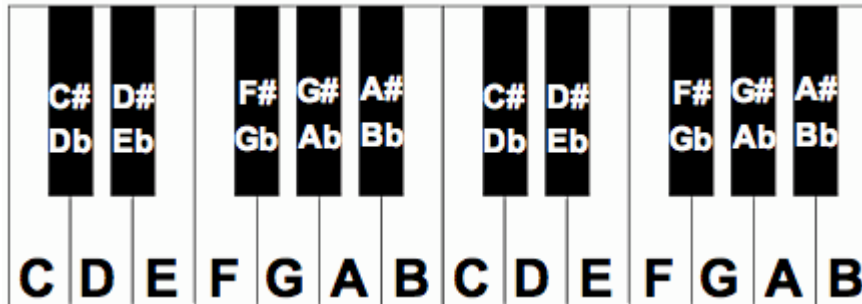
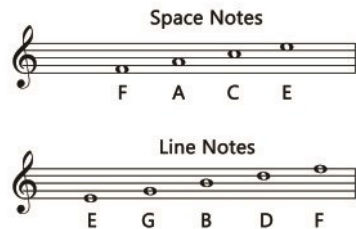


KNOWLEDGE ORGANISER: Keyboard Skills 2



TREBLE CLEF: RECAP



NOTE LENGTHS

	Semibreve	4 beats	
	Minim	2 beats	
	Crotchet	1 beat	
	Quaver	1/2 beat	
	Semiquaver	1/4 beat	

C is to the left of the two black keys!

ShaRp notes are to the Right →

← Flat notes are to the Left ♭

Every sharp note can be referred to by another name, a flat.

This is called an *enharmonic equivalent*.

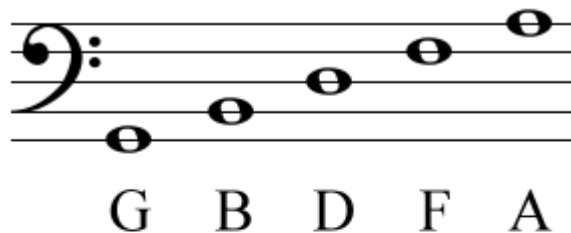
KEYBOARD SKILLS 2

Adding a **dot** to a note, makes it **half as long again**.

A crotchet = 1 so a dotted crotchet = 1.5

A minim = 2 so a dotted minim = 3

BASS CLEF LINES

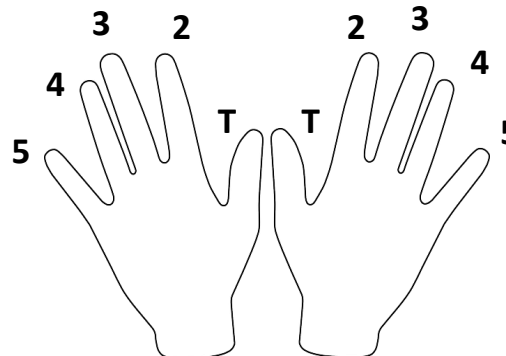


The notes on the lines on the treble clef stave can be easily remembered by the mnemonic;

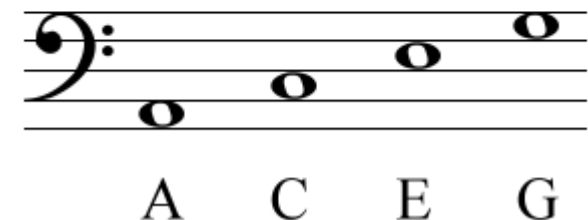
Great Big Dogs Fight Animals

HAND POSITION

Hand position is very important in our keyboard playing. It helps us to play more fluently, prevents injury and builds towards strong muscle memory.



BASS CLEF SPACES



The notes in the spaces of the treble clef stave can be easily remembered by the mnemonic;

All Cows Eat Grass